

GIATA tips & deals

Technical manual of gateway

Author: GIATA mbH
Established on: 18.10.2007
Last Update: 24.09.2008
Version: 1.6



Contents

- 1 **Introduction** Fehler! Textmarke nicht definiert.

- 2 **HTML API**4
 - 2.1 Parameter6
 - 2.2 API Key.....7
 - 2.3 Logging.....7

- 3 **XML API**8
 - 3.1 List.....8

- 4 **Contact data** Fehler! Textmarke nicht definiert.

1 Introduction

GIATA provides additionally to hotel-data information about touristic attractive points of interest nearby the respective hotel. Through this you will get addresses and descriptions of restaurants, touristic landmarks, medical facilities and other places interesting for tourists.

The present document is a technical manual for all customers of GIATA EHG and IHG products. The following description will comment the data-access to the hotel-vicinity-data of the tips & deals offer of GIATA.

All data will be permanently updated through the GIATA portal www.tips4earth.com by the service-provider. Changes and updates of the data-asset will be provided continuously through an xml gateway on daily base.

The existing gateways provide a fast and easy way for query data from the portal. You can use the big spectrum of the GIATA data with an often short URL. For this we provide complete html-components or raw-data that you can embed at your own touristic-website.

We are able to provide: pictures, texts, detail-data of points of interest. Furthermore it's possible to execute a neighbourhood-search and get according results back.

An simple example of how to embed a tip at your site follows under:
<http://www.tips4earth.com/api/tip/<name>-<tippid>.html?apikey=<apikey>>

To access the gateway you need an API key that is bound to your domain. This key you will get by GIATA. You will receive your API key per mail after signing an additional contract that expands the existing IHG/EHG contract.

2 HTML API

The html-gateway delivers points of interest (POI) of the GIATA tips & deals-offer as html component.

By having an URL and according parameter one can embed this component – for example by an i-frame – at the own website.

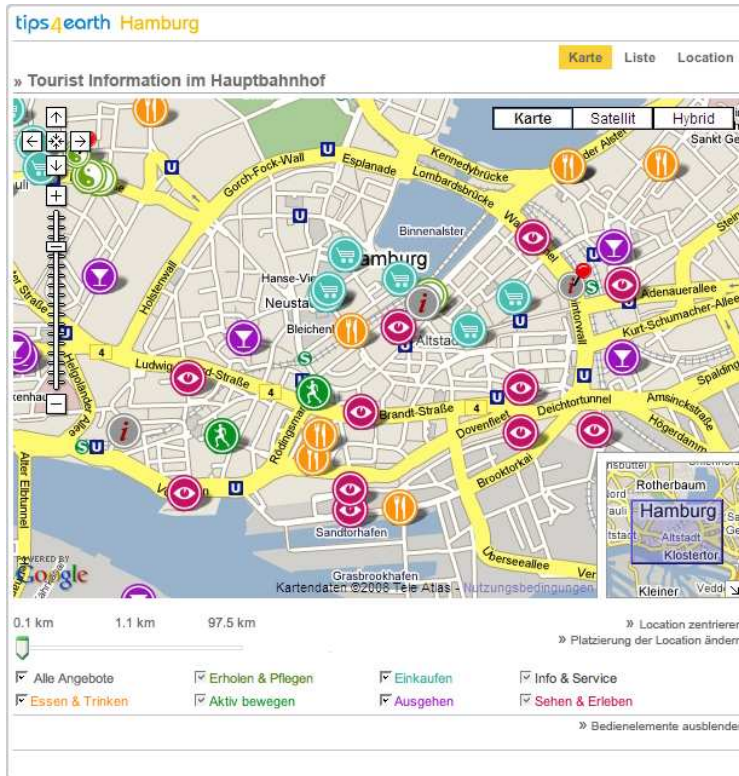


Figure 1: Example of an i-frame“– tips4earth Map

The visualization and functions are analogue the presentation at the reference-portal www.tips4earth.com. The visual adjustment of the display of i-frame elements like map and “cards” (blue-, silver-, gold-card) is reserved to GIATA.

Detailed information about the POIs will be provided as html in three specifications:

- tips4earth BlueCard
- tips4earth SilverCard
- tips4earth GoldCard

Over that gateway one can call up only information that GIATA got provided about a POI. This especially concerns the extended information of silver- and gold-card.

The tips4earth **BlueCard** contains:

- Name
- Address, phone, fax, email (if available)
- Related destination and category
- Short description (165-255 characters)
- Price (possibly)
- 1 picture
- 1 VCF-file (business card)
- Review by users (solely about points of interest, not about hotels)
- Map entry



Figure 2: BlueCard depiction

The **SilverCard** of a location may contain additionally to the basic data the following information:

- Up to 4 pictures altogether
- Mention of the web address (URL)
- Up to 2 PDF-files (for example: menu)
- Actual information (events etc.)
- Extended short description (up to 1,000 characters)

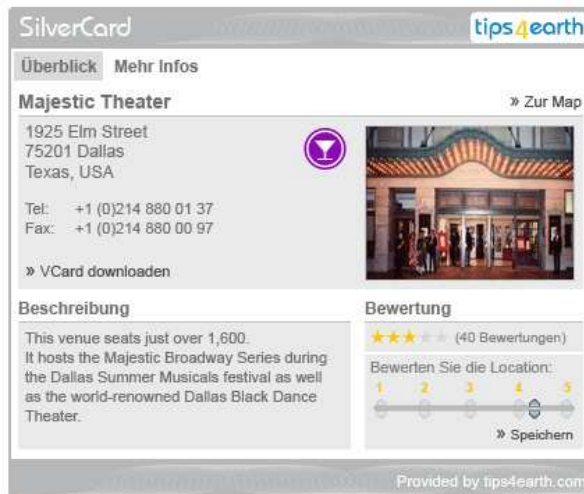


Figure 3: SilverCard depiction Overview and Further info

The **GoldCard** of a location may additionally contain Voucher/Discounts of the POI that the user can download for use.

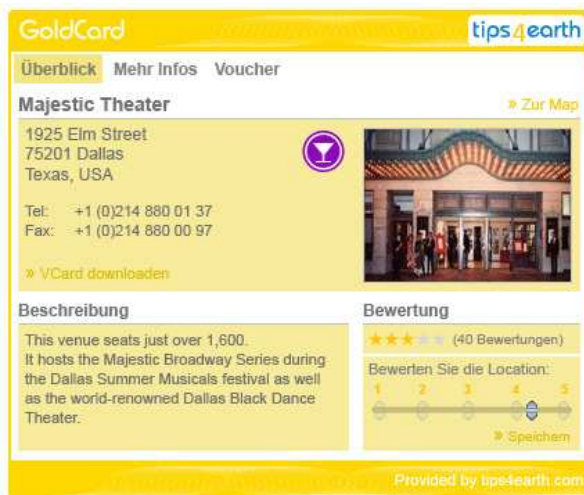


Figure 4: GoldCard depiction Overview

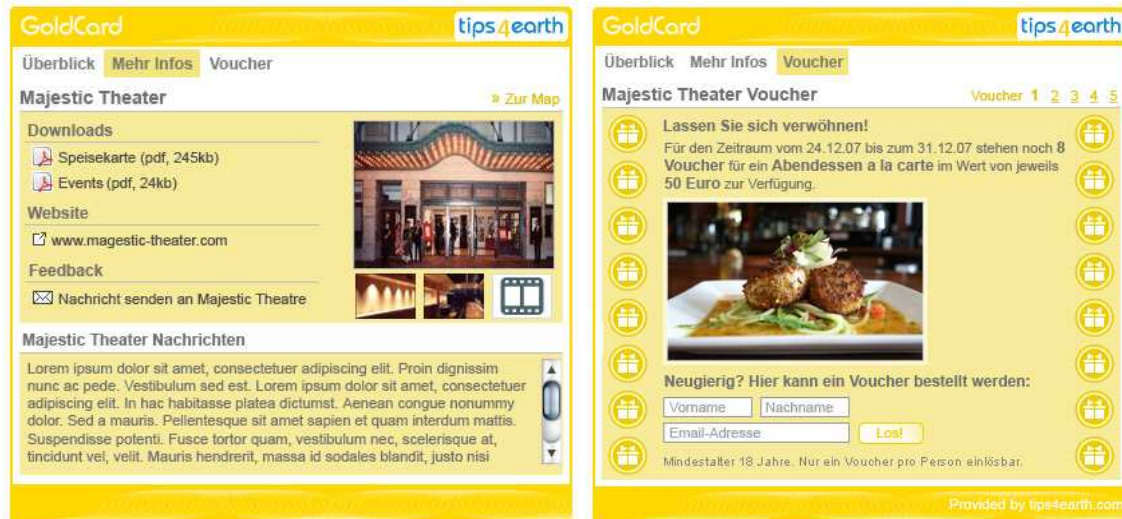


Figure 5: GoldCard depiction Further info and voucher

It is possible to switch between the different „tabs“ of a card and to navigate between the different POIs (by card-depiction).

It is not allowed to change the available Location Cards of the points of interest without permission of GIATA.

Base URL of tips is: <http://www.tips4earth.com/api/tip/<name>-<tippid>.html>

The placeholders in squared brackets will be replaced by the according entry. The name of the html-site consists of tip-name and tip-ID.

It is possible to generate a map-depiction of a GIATA hotel by the API additionally to the POIs. Only the map of the hotel including filter-function will be displayed. Navigation on the map will work analogue the functions of the tips (POIs)

Base URL of hotels is: <http://www.tips4earth.com/api/hotel/<name>-<giataid>.html>

The name of the html-site again consists of hotel-name and according GIATA ID.

Besides the display of POIs and hotels API offers the possibility to fill in a geo-referenced point including a zoom-level. Through this it will be possible to get the neighbourhood-data of the chosen point displayed.

The base-URL of a query of a certain point is: <http://www.tips4earth.com/api/geo/<name>.html>

The name of the HTML-site will again originate from the URL. To get a result from this URL it is necessary to mention a few parameters. View next chapter.

2.1 Parameters

The base URL of the HTML API may respectively have to contain the following parameters:

Parameter	Needed	Default	Comment
apikey	yes		This key is mandatory to control the API access
affiliateid	no		Some customers have an affiliate-system (for example IHG). To be able to record the calls better, this ID is needed.
customid	no		Specific customer ID necessary for accounting.
cardTab	no	Map respectively the tab last used at this session	Tab of the card that shall be displayed initially. Valid entries are 'data', 'news', 'map', 'pdf' or 'list'
longitude	no		Mandatory attribute only if a geo-query is conducted that contains the longitude of the displayed point.
latitude	no		Mandatory attribute only if a geo-query is conducted that contains the latitude of the displayed point.
locale	no	Locale of requests	Locale in which the card shall be displayed. Valid entries are 'en' and 'de'.
mapHeight	no	500	Height of displayed map.

mapType	no	3	Type of the map that shall be displayed. 1 – normal map 2 – satellite 3 – hybrid (map + satellite) 4 – area
mapOverview	no	1	Flag to turn off the overview-windows of the map 1 – overview-window is displayed 0 – overview-window is hidden
poiCount	no	15	Initial number of POIs displayed on the map.
poiNumber	no	200	Total number of delivered POIs.
poiStatus	no	1	State of delivered POIs. Allowed entries (0 all POIs, 1 only complete POIs)
poiCategories	no	All	Roster of categories that shall be displayed separated by commas. Entries are: EatingDrinking, OutintheEvening, ActiveExercise, SeeingExperiencing, InfoService, Recreation, Shopping
showTitle	no	1	Flag to turn off the name of the location 1 – name is displayed 0 – name is hidden

2.2 API Key

The access to the API will be controlled by a key. This key is a MD5 coded entry of the customer's domain (analogue the Google Maps API). GIATA provides the key to the customers by mail respectively deposits it at the customer-access.

2.3 Logging

Page impressions (PI) will be recorded. The display of a tip or a hotel, the display of a map info respectively each further click on a tip is a PI.

The following data will be recorded:

Column	Comment
date	Date of call up
apikey	Key of call up
affiliateid	Affiliate ID if available
customid	DCustom ID if available
domain	Domain of the referrer.
IP	IP address of the client that conducted the call up.
giataid	If available
tippid	ID of the displayed object
pi	Page Impression flag

3 XML API

The XML gateway provides Points of Interest (POI) of the GIATA tips & deals offer in XML-format. It is possible to get neighbourhood-data for a certain coordinate by an URL and according parameters.

The base URL for the XML API is: <http://www.tips4earth.com/api/xml/<method>?<parameter>>

The placeholders in squared brackets will be replaced by the according entries that are explained following.

Currently there is the following method available:

- List – delivers the stated parameters of the POIs.

3.1 List

The list method provides to the stated coordinates a number of POIs.

Parameter	Needed	Comment
apikey	yes	This key is mandatory to control the API access. If the check fails a failure message will be shown.
longitude	(yes)	Longitude of the coordinate to get the neighbourhood-data. (Either longitude, latitude or the GIATA ID has to be noted.)
latitude	(yes)	Latitude of the coordinate to get the neighbourhood-data. (Either latitude, longitude or the GIATA ID has to be noted.)
giataid	(yes)	GIATA ID of a hotel. Longitude or latitude of the hotel will be used for the neighbourhood-search. (Either longitude, latitude or the GIATA ID has to be noted.)
poiNumber	no	Total number of delivered POIs. Default is 20.
poiStatus	no	State of delivered POIs. Allowed entries (0 all POIs, 1 only complete POIs)
maxDistance	no	Maximum distance that a location can have from the entered coordinate.

Call up example:

<http://www.tips4earth.com/api/xml/list?apikey=<key>&longitude=<longitude>&latitude=<latitude>>

or

<http://www.tips4earth.com/api/xml/list?apikey=<key>&giataid=<gid>>

DTD:

```
<!ELEMENT response (item* | error) >
```

```
<!ELEMENT item EMPTY>
```

```
<!ATTLIST item id ID #REQUIRED >
```

```
<!ATTLIST item type CDATA #REQUIRED >
```

```
<!ATTLIST item title CDATA #REQUIRED >
```

```
<!ATTLIST item longitude CDATA #REQUIRED >
```

```
<!ATTLIST item latitude CDATA #REQUIRED >
```

```
<!ATTLIST item distance CDATA #REQUIRED >
```

```
<!ELEMENT error (#PCDATA)>
```

```
<!ATTLIST error id ID #REQUIRED >
```

Result:

```
<?xml version="1.0" encoding="UTF-8"?>
```

```
<response>
```

```
  <item type="AktivBewegen" title="Aqua Paradise" longitude="27.684131" latitude="42.65725" distance="2340" id="72597" />
```

```
  ...
```

```
</response>
```

```
<?xml version="1.0" encoding="UTF-8"?>
```

```
<result>
```

```
  <error id="1">Falscher API Key.</error>
```

```
</result>
```

4 Contact data

For further information about this manual please contact Florian Röllig at any time. Email: florian.roellig@giata.de

The general terms and conditions of the GIATA Company for the development and commercialization of interactive tourism-applications are valid as taken notice of.

The general terms and conditions are available at: www.giata-mbh.de/agb